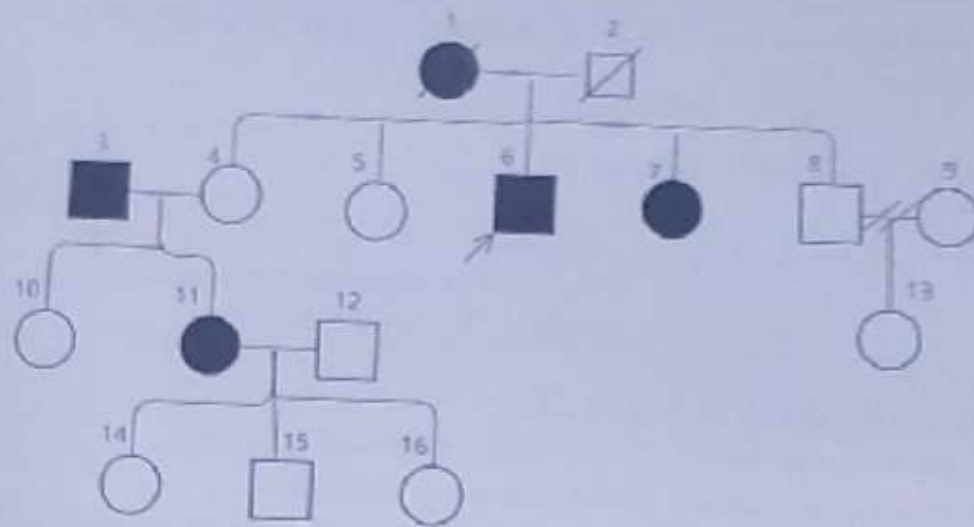


- Identify the type of inheritance as seen in the pedigree, justify your answer
- What is the relationship between individuals 8 and 9



ii. A population geneticist was conducting a survey for a particular species of wild boar in a given forest area. Out of the 18760 boars that he counted, 5532 showed a dominant phenotype. Find out if this population is in HW equilibrium. (Round off to two decimal places; + 10% deviation is acceptable). (3)

Ten years later, he conducted a similar study and found that the population increased to 21650 and there were now 4013 homozygous phenotype, 4400 with a heterozygous dominant phenotype, and the rest with a recessive phenotype. Is the population still in HW equilibrium? If yes, justify your answer, if not, give probable causes of drift. (3)
